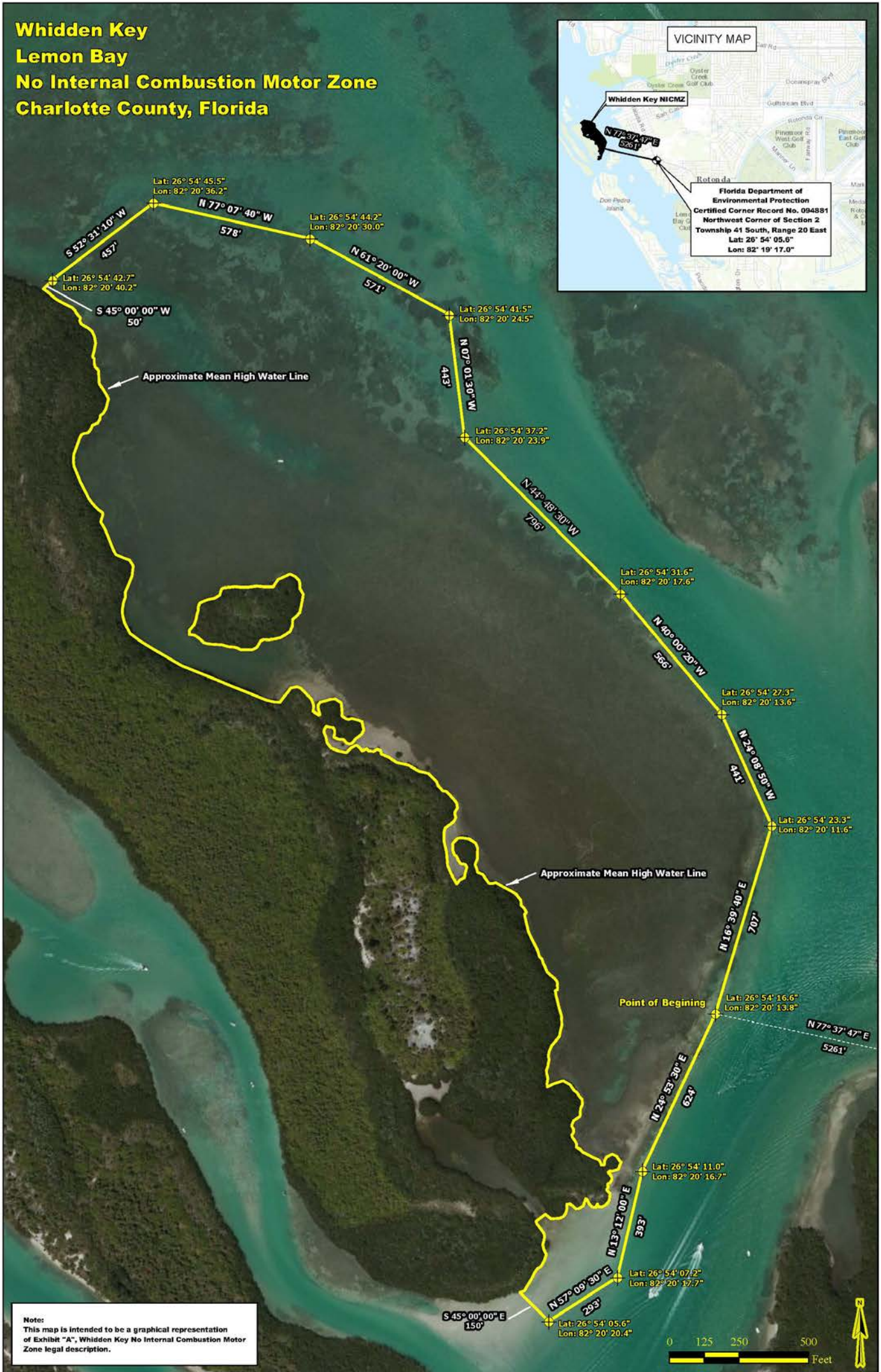


Map and Description of the Whidden Key No Internal Combustion Motor Zone
for Rule 62-330.411, Florida Administrative Code



**Map and Description of the Whidden Key No Internal Combustion Motor Zone
for Rule 62-330.411, Florida Administrative Code**

All that portion of those sovereign submerged lands lying Easterly of Government Lots 4, 5 and 8, Section 18, Township 41 South, Range 20 East and Southerly of Government Lot 8, Section 18, Township 41 South, Range 20 East [known as Whidden Key (AKA Whidden Island)]; in Lemon Bay, Charlotte County, Florida described as follows:

Commence at an aluminum cap in concrete identified as a Charlotte County Section Corner on Florida Department of Environmental Protection, Certified Corner Record Number 094881, (Northwest Corner of Section 21, Township 41 South, Range 20 East), with a NAD 83 (1990) coordinate position of Latitude $26^{\circ} 54' 05.6''$ and Longitude $082^{\circ} 19' 17.0''$; thence N $77^{\circ} 37' 47''$ W, a distance of 5261 feet more or less to a ten inch diameter wood piling with a coordinate of position of Latitude $26^{\circ} 54' 16.6''$ and Longitude $082^{\circ} 20' 13.8''$ as the **Point of Beginning**; thence N $16^{\circ} 39' 40''$ E, a distance of 707 feet more or less to a ten inch diameter wood piling with a coordinate of position Latitude $26^{\circ} 54' 23.3''$ and Longitude $082^{\circ} 20' 11.6''$; thence N $24^{\circ} 08' 50''$ W, a distance of 441 feet more or less to a ten inch diameter wood piling with a coordinate position of Latitude $26^{\circ} 54' 27.3''$ and Longitude $082^{\circ} 20' 13.6''$; thence N $40^{\circ} 00' 20''$ W, a distance of 566 feet more or less to a ten inch diameter wood piling with a coordinate position of Latitude $26^{\circ} 54' 31.6''$ and Longitude $082^{\circ} 20' 17.6''$; thence N $44^{\circ} 48' 30''$ W, a distance of 796 feet more or less to a ten inch diameter wood piling with a coordinate position of Latitude $26^{\circ} 54' 37.2''$ and Longitude $082^{\circ} 20' 23.9''$; thence N $07^{\circ} 01' 30''$ W, a distance of 443 feet more or less to a ten inch diameter wood piling with a coordinate position of Latitude $26^{\circ} 54' 41.5''$ and Longitude $082^{\circ} 20' 24.5''$; thence N $61^{\circ} 20' 00''$ W, a distance of 571 feet more or less to a ten inch diameter wood piling with a coordinate position of Latitude $26^{\circ} 54' 44.2''$ and Longitude $082^{\circ} 20' 30.0''$; thence N $77^{\circ} 07' 40''$ W, a distance of 578 feet more or less to a ten inch diameter wood piling with a coordinate position of Latitude $26^{\circ} 54' 45.5''$ and Longitude $082^{\circ} 20' 36.2''$; thence S $52^{\circ} 31' 10''$ W, a distance of 457 feet more or less to a ten inch diameter wood piling with a coordinate position of Latitude $26^{\circ} 54' 42.7''$ and Longitude $082^{\circ} 20' 40.2''$; thence S $45^{\circ} 00' 00''$ W, a distance of 50 feet more or less to the Easterly mean high water line of said Government Lot 4; thence in a general Southerly direction along the Easterly mean high water line of said Government Lots 4, 5, and 8 to a point on the mean high water line of Government Lot 8 lying N $45^{\circ} 00' 00''$ W, a distance of 150 feet more or less of a ten inch diameter wood piling with a coordinate position of Latitude $26^{\circ} 54' 05.6''$ and Longitude $082^{\circ} 20' 20.4''$; thence from said point on the mean high water line of Government Lot 8, S $45^{\circ} 00' 00''$ E, a distance of 150 feet more or less to a ten inch diameter wood piling with a coordinate position of Latitude $26^{\circ} 54' 05.6''$ and Longitude $082^{\circ} 20' 20.4''$; thence N $57^{\circ} 09' 30''$ E, a distance of 293 feet more or less to a ten inch diameter wood piling with a coordinate position of Latitude $26^{\circ} 54' 07.2''$ and Longitude $082^{\circ} 20' 17.7''$; thence N $13^{\circ} 12' 00''$ E, a distance of 393 feet more or less to a ten inch diameter wood piling with a coordinate position of Latitude $26^{\circ} 54' 11.0''$ and Longitude $082^{\circ} 20' 16.7''$; thence N $24^{\circ} 53' 30''$ E, a distance of 624 feet more or less to the Point of Beginning.

The wood pilings will control the location of description. Bearings and distances are derived from the latitude and longitude coordinates. Coordinate positions are based on NAD 83 (1990).